

3. ORGANISATION FOR QUALITY

3.1 The internal organisational structure of the Company as it relates to Quality is shown diagrammatically in the three organisational charts that follow:

- Chart 1 - Senior Management
- Chart 2 - Typical Department
- Chart 3 - Quality System Department

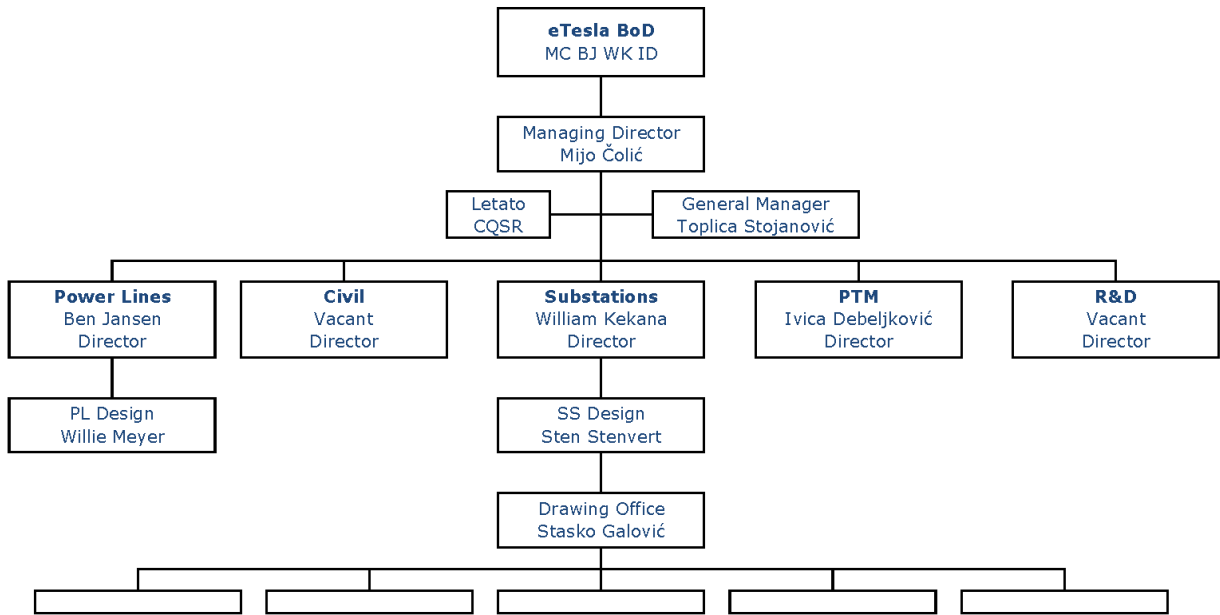


Chart 1: Senior Management Structure

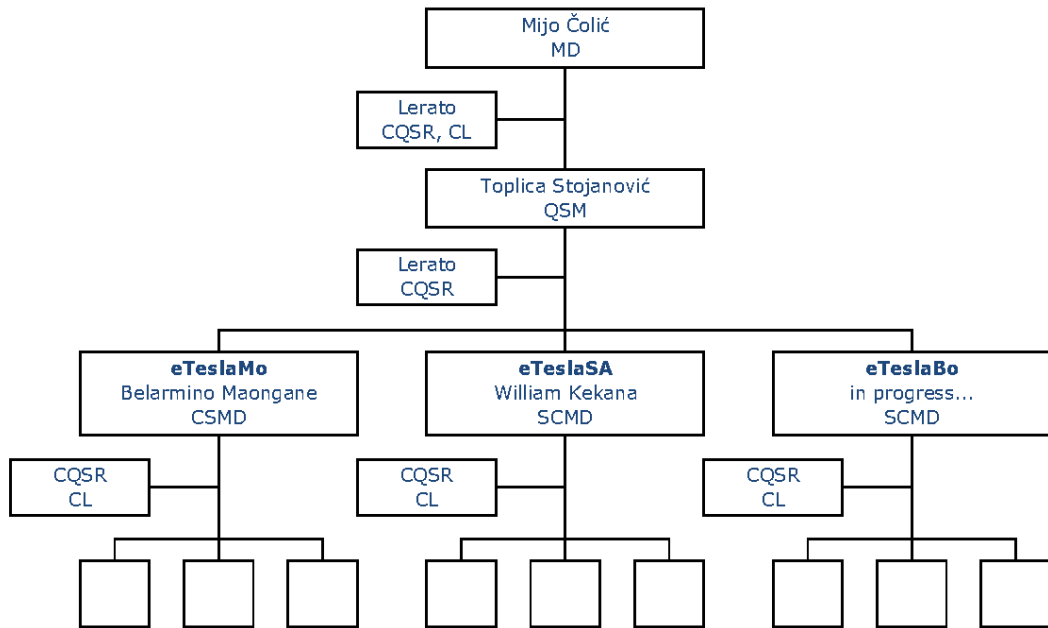


Chart 2: Typical Subsidiary Company Structure

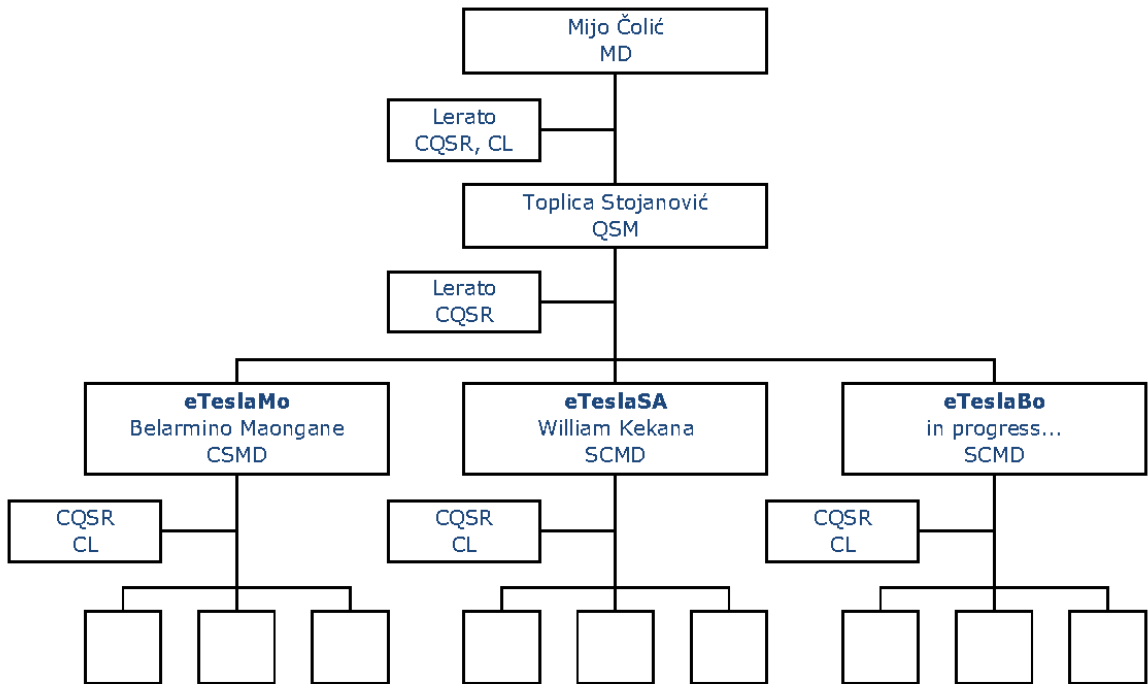


Chart 3: Quality System Structure